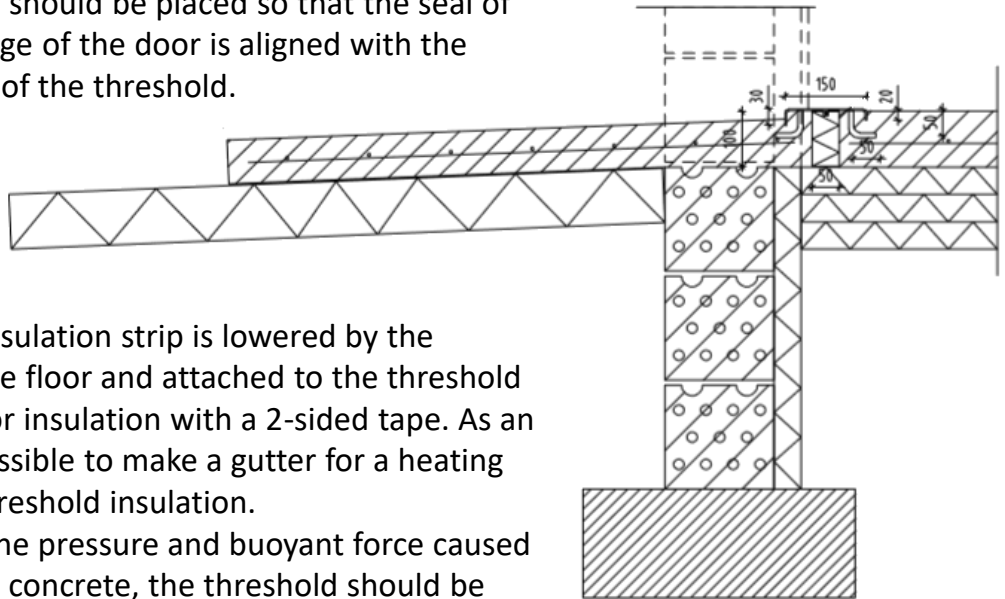


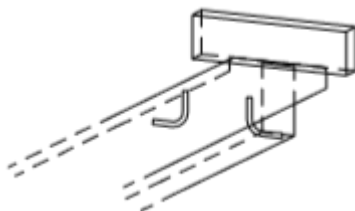
- ✓ ENERGY SAVING THRESHOLD FOR A GARAGE
- ✓ THE ONLY THRESHOLD IN THE MARKET THAT PREVENTS THE COLD FROM THE OUTSIDE FROM REACHING THE FLOOR INSIDE

- ✓ Thermokynynys is available as up to 6000 mm in length, excluding joints. Longer thresholds can be manufactured with edge joints .
- ✓ The length of the threshold can be selected freely.
- ✓ **Border reinforcement** is an optional separate component for Thermokynynys.
- ✓ For freezing conditions the threshold can be equipped with a Thermokynynys Heat heating system.
- ✓ Thermokynynys can be used for roll-up, up-and-over, and folding doors in new and refurbishment projects.

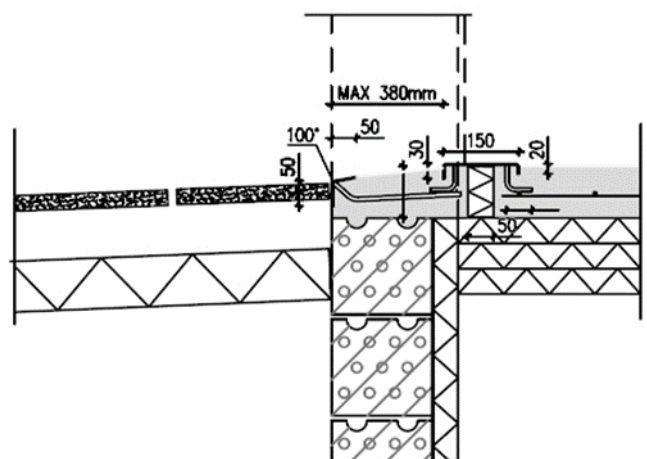
- ✓ Thermokynynys should be placed so that the seal of the bottom-edge of the door is aligned with the thermal break of the threshold.

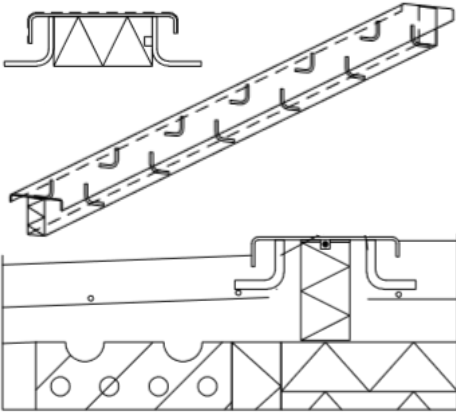


- ✓ The thermal insulation strip is lowered by the thickness of the floor and attached to the threshold and to the floor insulation with a 2-sided tape. As an option, it is possible to make a gutter for a heating cable in the threshold insulation.
- ✓ To withstand the pressure and buoyant force caused by pouring the concrete, the threshold should be supported during the pouring from both ends by a wooden block (2"x4"), attached to the wall (picture on the right).
- ✓ To minimize the possible empty space under the threshold, start pouring the concrete from the center of the threshold using a proper concrete vibrator.



## THERMOKYNNYS REUNAVAHVIKKEELLA





## DELIVERY CONTENTS

- ✓ Threshold 3 mm steel ( aisi 316 ).
- ✓ Mountings welded to the threshold( stainless steel k400).
- ✓ Insulation strip 50x100 + 2-sided tape strips
- ✓ **Thermokynnys Heat** includes all the necessary cables, a sensor and a thermostat.
- ✓ **Border reinforcement** is an option which has to be ordered separately.

[www.thermokynnys.com](http://www.thermokynnys.com)