






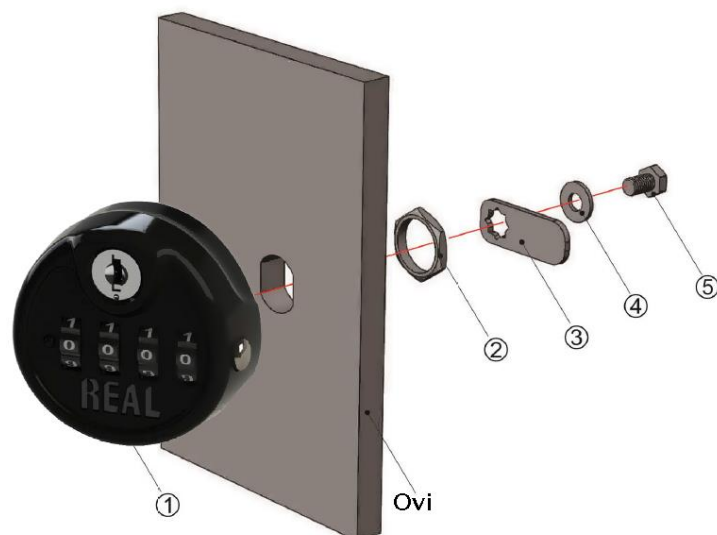
REAL 10347 – Asennusohje

1. Lukon osat

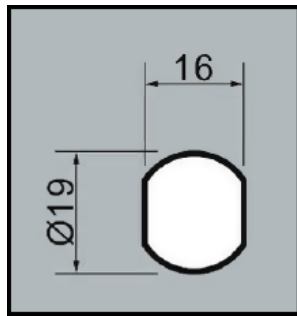
Nr	Kuvaus	Kpl	Kuva
①	Lukkorunko	1	
②	Mutteri	1	
③	Telki	1	
④	Prikka	1	
⑤	Ruuvi	1	

2. Asennusohjeet

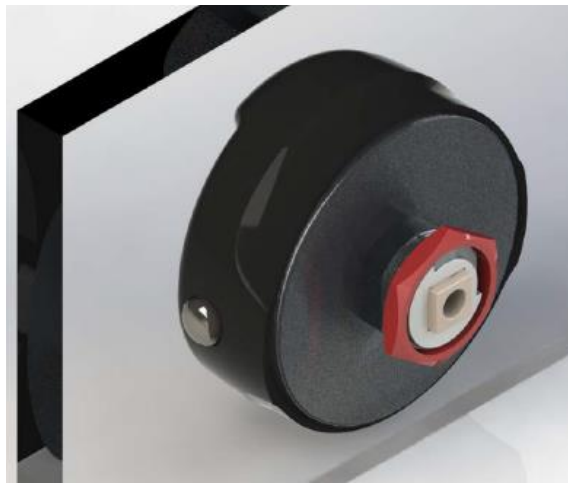
a. Asenna osat numeroiden osoittamassa järjestyksessä



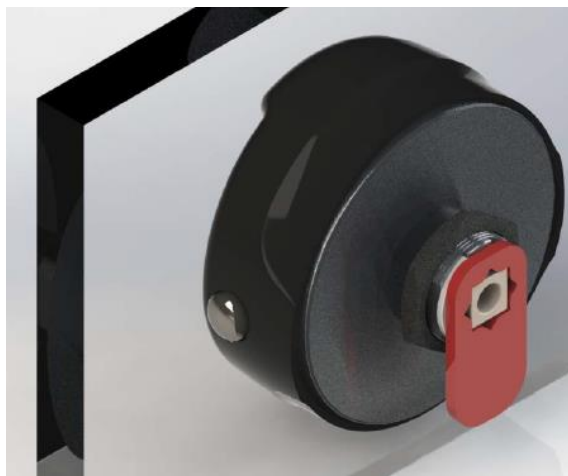
b. Pora 19 x 16 mm asennusreikä



c. Aseta lukko asennusreikään ja kierrä mutteri paikalleen



d. Asenna telki paikalleen



e. Viimeistele asennus kiinnittämällä telki paikalleen ruuvilla



Prosella Scandinavian Oy
www.prosella.com