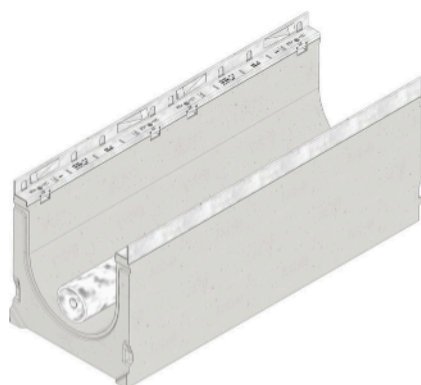
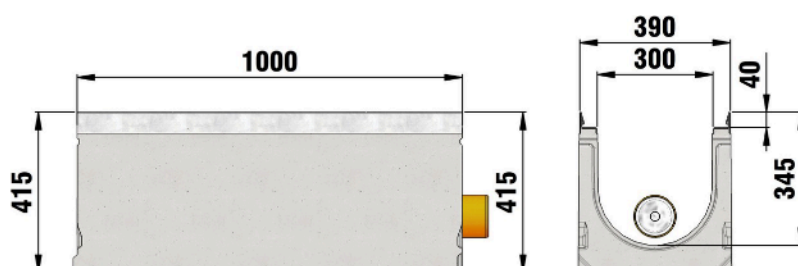


DRAINFIX®CLEAN FSU 300

DRAINFIX®CLEAN FSU 300 filter substrate channel up to class F 900 with galvanised angle housing, with drainage pipe with geotextile and connection element, Type 01, starting element, 1,0 m



F 900



■ Technical data:

Length mm	Width mm	Height mm	Weight kg	Retention volume l/m	Retention cross-section cm ² /m	Filling height of substratum (effective) mm	Substratum required per metre l/lfdm.	Item-no.
1000	390	415	159.835	36.6	366.0	150.0	44.0	97600

■ Product description:

DRAINFIX CLEAN 300 KR type 01 - Starting element, filter substrate channel with the operating principle of surface filtration, made of fibre reinforced concrete, nominal width 300 mm, load class A 15 to F 900 according to EN 1433, CE compliant, with certification according to Korea Environment Corporation (KECO), with edge frame made of galvanised steel and with boltless quick-locking system SIDE-LOCK, 8-fold locking per meter, incl. DRAINFIX CLEAN-drainage pipe DN/OD 100 wrapped with geotextile and connector, tied at the end, LxWxH 1000x390x415 mm, item no. 97600

■ Material:

- **Channel body:** fibre-reinforced concrete
- **Angle housing:** Steel with zinc-magnesium coating

■ Type acc. DIN EN 1433:

M

■ Application areas:

The optimal use of the product in the aforementioned applications depends on various factors (positioning, traffic load and frequency,...). Our experts will be happy to advise you!