

Length // ► Feed direction

Width



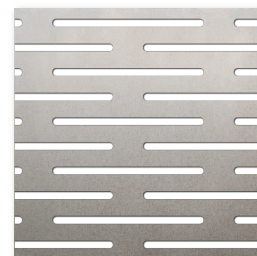
LR1x20 Z3.25x24

Figure drawn to scale 1:1

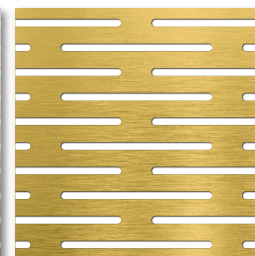
LR1x20 Z3.25x24



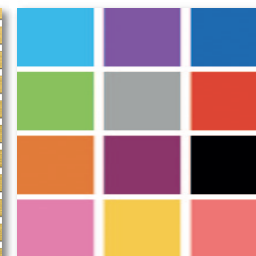
### Available materials\*



Steel

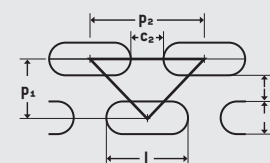


Aluminium



Powder-coated

Available in standard formats and **individual dimensions (w x l)** of at least **125 x 300 mm** to maximum **1,000 x 2,000 mm**, as well as in sheet thickness of **1.0 mm**.



Slotted holes  
staggered pitch  
 $w = 1 \text{ mm}$ .  $l = 20 \text{ mm}$   
 $c_1 = 2.25 \text{ mm}$ .  $c_2 = 4 \text{ mm}$   
 $p_1 = 3.25 \text{ mm}$ .  $p_2 = 24 \text{ mm}$   
Open area: 25.37 %

\* Not all materials are available in all formats and sheet thicknesses.



.....  
SELECT AND ORDER  
ONLINE  
.....

All variants of this product can be found online in our shop. **Simply enter the product name in the online search.**

