

Length // ► Feed direction

Width



LR10x50 Z19x60

Figure drawn to scale 1:1

LR10x50 Z19x60



Available materials*



Steel

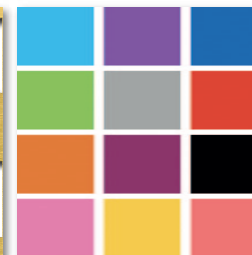
Sendzimir-galvanised

Aluminium

Stainless steel

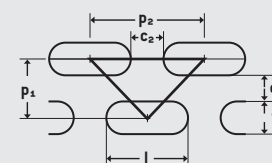


Brass



Powder-coated

Available in standard formats and individual dimensions (w x l) of at least 125 x 300 mm to maximum 1,500 x 3,000 mm, as well as in sheet thicknesses from 1.0 to 3.0 mm.



Slotted holes staggered pitch
w = 10 mm. l = 50 mm
c₁ = 9 mm. c₂ = 10 mm
p₁ = 19 mm. p₂ = 60 mm
Open area: 41.97 %

* Not all materials are available in all formats and sheet thicknesses.



SELECT AND ORDER
ONLINE

All variants of this product can be found online in our shop. Simply enter the product name in the online search.

