



Multi9

Multistandard protection for OEM applications

se.com/multi9

Life Is On

Schneider
Electric



Multi9 has been designed to offer enhanced protection by preventing and protecting people and equipment from electrical threats such as short circuits, earth leakages, overloads, and more.

A comprehensive range for enhanced protection against electrical threats

Multi9 is a range of DIN rail modular devices, a solution offering great performance. Multi9 range is built to meet the major standards for industry applications. Designed to meet your needs for most types of machines, it offers a wide range of modular devices providing protection, signalling functions, and accessories.

Renowned quality

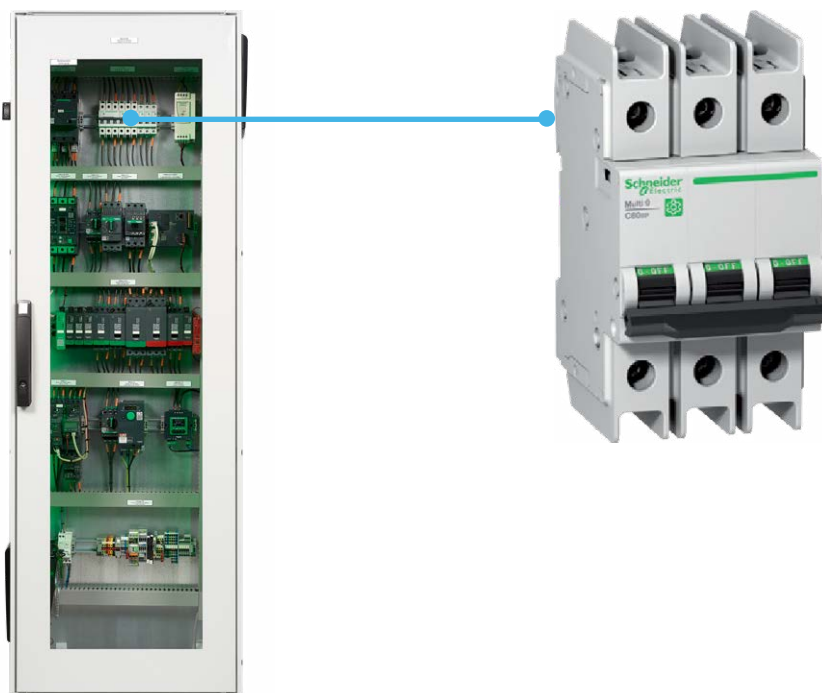
World leader's proven technology and experience.

Available worldwide

Sold under the same commercial reference.

Optimized

Small footprint to reduce your panel size, cost-effective, and less commercial references.



Multi-standard

Multi9 covers all standards for industry application: UL/CSA for North America, IEC, EAC, CCC and others for the rest of the world. It allows a unique panel design



Wide range of offers to cover all functions in a control panel

Wide range of solutions that are customized to fit your efficiency and sustainability needs



Optimized references which is easy to select

- Time-saving
- Easy to procure and install
- Meaningful commercial references



Sustainable with Green Premium™ compliance

- 70% of the packaging is made with recycled cardboard
- Green Premium™ products are RoHS and REACH compliant

Multi-standard

Multi9 - range with advanced protection

Designed to offer enhanced protection by preventing and protecting people and equipment from electrical threats such as short circuits, earth leakages, overloads, and more.



Miniature Circuit Breakers

Protection against short circuits and overcurrent faults ensuring uninterrupted functionality.

- Ensures no accidental contact with live part - Finger-proof IP-20 terminals
- Avoids false insertion of cables and loose termination with Pull up terminals
- Total Flexibility : Line-Load reversibility
- Low cost with higher performance: Cascading. Cascading charts available From ACB-MCCB-MCB level.
- Reduce Downtime: Discrimination. Discrimination charts available From ACB-MCCB-MCB level
- Easy Installation: Bi - connect terminals
- Increased service life: Fast Closing mechanism
- Environmentally friendly with 100% recyclable & recoverable materials.



Surge Protection Devices

Surge protection, harmonic filtering and voltage regulation from home to the data center to industrial environments.

- Affordable - An affordable way to protect your infrastructure from potential hazards.
- Easy Repair & Replacement - Surge protectors protect your electrical devices from burnout and expand their lifespan.
- Reduced Maintenance Costs – Because surge protectors limit excessive voltage, they can protect your appliances, HVAC system, and more. Thus reducing the number of maintenance calls you make.



Residual Current Device

Safe and reliable protection against earth fault, fire protection, and electrocution ensuring people's safety, delivering efficiency, and service continuity.

- Easy monitoring: Earth fault indication on front face .
- Immunity against nuisance tripping.
- New SI RCDs offers enhanced immunity to electrical disturbances and polluted & corrosive environments.
- Easy Installation: bi-connect terminals.
- Field fittable auxiliaries for advanced protection & monitoring.



Indication and Tripping Auxiliaries

OF, SD, OF/SD+OF for basic (from 100 mA to 6A) and advanced (from 2 mA to 100 mA) applications.

- Compliant in harsh environments with low current auxiliaries.
- Optimize your wiring (less wires and wiring time) inside a panel with the daisy chain architecture with low current auxiliaries.
- Monitor up to 100 protective devices (permanently close) under the daisy chain.
- Tripping auxiliaries: MN, MX
- Instantaneous or delayed option: independent of the supply voltage.



Vast range for superior protection



C60BP- Miniature Circuit Breaker for Branch Protection (BP)

- UL 489, CSA, IEC, and CCC certified
- UL 489 performances: Up to 35 A in 480 Y/277 V and up to 63 A in 240 V
- New optimized design and smaller footprint (103 mm/4.05 in): Each references up to 35 A cover both 480 Y/277 V and 240 V power supplies
- In addition to the accessories range, the UL cuttable combs are now available



C60BPR- Miniature Circuit Breaker for Branch Protection with Ring Terminal (BPR)

- UL 489, CSA, IEC, and CCC certified
- UL 489 performances: Up to 35 A in 480 Y/277 V and up to 63 A in 240 V
- New optimized design and smaller footprint: Each references up to 35 A cover both 480 Y/277 V and 240 V power supplies
- Ring tongue terminal ready to wire as delivered open



C60SP- Miniature Circuit Breaker for Supplementary Protection (SP)

- UL 1077, CSA, IEC and CCC certified
- UL 1077 performances: up to 63A in 480 Y/277 V
- B, C & D curves

C60N/H/L- Miniature Circuit Breaker for IEC Zone

- IEC/EN 60947-2 and CCC certified
- Up to 20 kA (440 V)
- B, C & D curves



C60H-DC- Miniature Circuit Breaker, "H" breaking capacity for Direct Current Applications

- UL1077, IEC, and CCC certified
- To protect your direct current applications up to 500 V DC
- B, C & K curves



Wide range of offers to cover all functions in control panels

Fully compliant with all industry standards, Multi9 is ideally suited for all types of machine and equipment, providing you not only with protection but plenty of accessories as well as signaling functions.



Time-saving



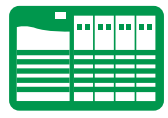
Easy to buy and install from the same vendor



Easy co-ordination



Easy warranty and maintenance



PLC (Programmable Logic Controllers)

Control and monitor industrial operations in a sustainable, flexible, efficient and protected way. Our PLCs and PACs supply edge technology, augmenting it with Ethernet connectivity, built-in cybersecurity, and processing power needed to handle Big Data analysis and protecting against new vulnerabilities among connected industrial assets, across devices, or into the cloud.



Push buttons

Ensure robust, safe, ergonomic, and easy control of machines and manufacturing lines delivering efficiency and effectiveness.



HMI

Simple and effective means of connecting systems, collecting data, and presenting information. Perform diagnostics, add control, and adjust system settings on simple or compact applications from the smallest text display to the most sophisticated industrial PC.



Speed drives

Powerful and reliable combination for your motor control solutions made to the highest quality level to meet your needs in various applications, such as industrial processes, machines, or buildings.



Green Premium™

An industry leading portfolio of offers delivering sustainable value



More than 75% of our product sales offer superior transparency on the material content with regular information and environment impact of our products:

- RoHS compliance
- RECh substance information
- Industry leading # of PEP's*
- Circularity instructions



Discover what we mean by green ...
[Check your products!](#)

The Green Premium™ program stands for our commitment to deliver customer-valued sustainable performance. It has been upgraded with recognized environmental claims and extended to cover all offers including Products, Services, and Solutions.

CO2 and P&L impact through Resource Performance

Green Premium™ brings improved resource efficiency throughout an asset's lifecycle. This includes efficient use of energy and natural resources, along with the minimization of CO₂ emissions.

Cost of ownership optimization through Circular Performance

We're helping our customers optimize the total cost of ownership of their assets. To do this, we provide IoT-enabled solutions, as well as upgrade, repair, retrofit, and remanufacture services.

Peace of mind through Well-being Performance

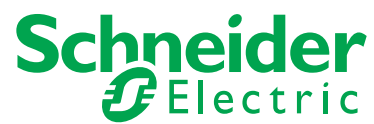
Green Premium™ products are RoHS and REACH compliant. We're going beyond regulatory compliance with step-by-step substitution of certain materials and substances from our products.

Improved sales through Differentiation

Green Premium™ delivers strong value propositions through third-party labels and services. By collaborating with third-party organizations, we can support our customers in meeting their sustainability goals such as green building certifications.

*PEP: Product Environment Profile (i.e. Environmental Product Declaration)

Life Is On



To learn more, visit
schneider-electric.com/multi9

Schneider Electric Industries SAS
35, rue Joseph Monier - CS 30323
F92506 Ruell-Malmaison Cedex

©2022 Schneider Electric. All Rights Reserved. Schneider Electric | Life Is On is a trademark and the property of Schneider Electric SE, its subsidiaries and affiliated companies.