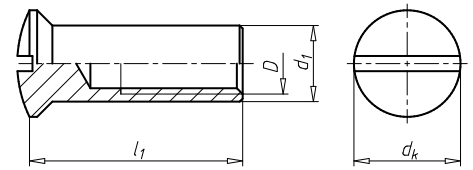


Hylsymutterit



D mm	d1 mm	Pituus	Kierrepiisuus	Kanta	Pitkittäisreiän leveys mm	Messinki/niklatu
M4	5	14	8	7	1,2	0392 4 14
M5	6,5	15	9	9	1,2	0392 5 15
M6	7,5	15	9	10	1,6	0392 6 15

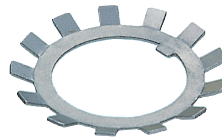
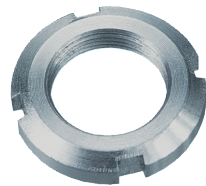
Pyöränmutterit



DIN 74361

M	AV	Sinkitty
M12x1,5	17	0360 001 215
M18x1,5	24	0360 001 815

Akselimutterit ja lukituslevyt



M	KM/MB	Akselimutteri DIN 981	Lukituslevy DIN 5406
M10x0,75	0	0385 999 900	0385 999 800
M12x1	1	0385 999 901	0385 999 801
M15x1	2	0385 999 902	0385 999 802
M17x1	3	0385 999 903	0385 999 803
M20x1	4	0385 999 904	0385 999 804
M25x1,5	5	0385 999 905	0385 999 805
M30x1,5	6	0385 999 906	0385 999 806
M35x1,5	7	0385 999 907	0385 999 807
M40x1,5	8	0385 999 908	0385 999 808
M45x1,5	9	0385 999 909	0385 999 809
M50x1,5	10	0385 999 910	0385 999 810
M55x2	11	0385 999 911	0385 999 811
M60x2	12	0385 999 912	0385 999 812
M65x2	13	0385 999 913	0385 999 813
M70x2	14	0385 999 914	0385 999 814
M75x2	15	0385 999 915	0385 999 815
M80x2	16	0385 999 916	0385 999 816
M85x2	17	0385 999 917	0385 999 817
M90x2	18	0385 999 918	0385 999 818
M95x2	19	0385 999 919	0385 999 819
M100x2	20	0385 999 920	0385 999 820
M105x2	21	0385 999 921	0385 999 821

Akselimutteri Nyloc	
0385 009 5	M25x1,5
0385 009 6	M30x1,5
0385 009 7	M35x1,5
0385 009 8	M40x1,5
0385 009 9	M45x1,5
0385 009 10	M50x1,5
0385 009 11	M55x2
0385 009 13	M65x2
0385 009 15	M75x2
0385 009 19	M95x2

- Itselukittuva
- Sinkitty

- Pinnoittamaton teräs