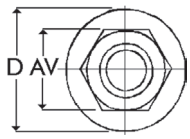


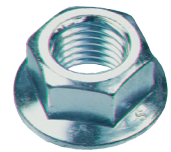
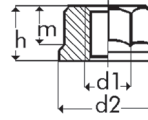
## Laippamutterit



### Lukitushammastus

M	AV	D mm	8 Sinkitty
M5	8	11,8	0394 05
M6	10	14,2	0394 06
M8	13	17,9	0394 08
M10	15	21,8	0394 010
M12	18	26,0	0394 012
M14	21	29,9	0394 014
M16	24	34,5	0394 016

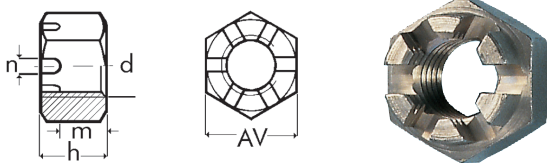
### DIN 6923 (ISO 4161)



### Ilman hammastusta

M	AV	h mm	d2 mm	8 Sinkitty
M6	10	6	14,2	0379 000 06
M8	13	8	17,9	0379 000 08
M10	15	10	21,8	0379 000 010
M12	18	13	26,0	0379 000 012
M16	24	16	34,5	0379 000 016

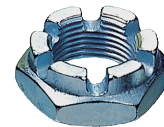
## Kruunumutterit



### DIN 935 (ISO 7035)

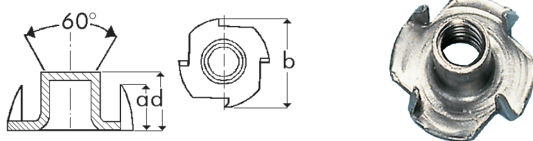
M	AV	m mm	h mm	n mm	Pinnoittamaton	Sinkitty
M8	13	6,2	9,5	2,5	03450 81	
M10	17	8	12	2,8	03450 10	
M12	19	10	15	3,5	03450 12	
M16	24	13	19	4,5	03450 16	
M20	30	16	22	4,5	03450 20	0345 20
M24	36	19	27	5,5	03450 24	0345 24
M30	46	24	33	7,0		0345 30
M36	55	29	38	7,0		0345 36
M42	65	34	46	9,0	03450 42	
M48	75	38	50	9,0	03450 48	

### Matala DIN 937



M	AV	m mm	h mm	Sinkitty
M20	30	8	13	0345 66 20
M24	36	9	15	0345 66 24
M27x2	41	11	17	0345 66 272
M30	46	11	18	0345 66 30
M30x2	46	11	18	0345 30 2
M30x1,5	46	11	18	0345 66 301
M36	55	12,6	20	0345 66 36
M36x1,5	55	12,6	20	0345 66 361
M42x1,5	65	14	22	0345 66 421

## Lyöntimutterit



M	a mm	d mm	b mm	Sinkitty
M4	5,5	8	15	0376 4 8
M5	5,5	8	17	0376 5 8
M5	5,5	12	17	0376 5 12
M6	7,0	9	19	0376 6 9
M8	7,5	12	22	0376 8 12
M10	11,0	16	25	0376 10 16

### DIN 1624 (ISO 10139)



M	a mm	d mm	b mm	Pinnoittamaton
M5	5,5	8	17	037615 8
M6	7,0	9	19	037616 9
M8	7,5	12	22	037618 12